

OhioTechNet

Partners in Training Ohio's Manufacturing Workforce

Ohio TechNet Monthly Meeting

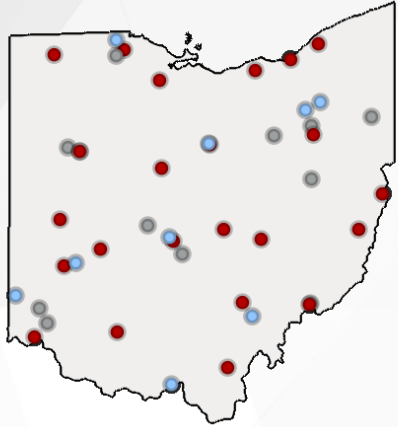
June 16, 2026

Thank you for joining us today!
Enter your name and organization in the chat



OhioTechNet

Partners in Training Ohio's Manufacturing Workforce



OTN Members:

- Community College
- Technical Center
- University

Vision

The members of the Ohio Technical Skills Innovation Network, or Ohio TechNet, are nationally recognized for partnering with industry to implement collaborative, innovative solutions that meet manufacturing and tech workforce needs.

Mission

Ohio TechNet supports workforce development and academic professionals to incubate, develop and sustain programming that accelerates the growth of Ohio's manufacturing & technical workforce.

Purpose

Ohio TechNet partners benefit from peer-to-peer collaboration, technical assistance and access to resources, making program expansion and innovation at their institution more efficient, faster to implement and easier to sustain.

Strategic Focus Areas

Ohio TechNet's strategic focus areas provide partners with best practices, models, and technical assistance to address the critical workforce needs in the state.

Guided Pathways for Youth

Reaching New Audiences

Innovative Earn and Learn

Faculty and Educator Development

Partnering with Industry

1**CONNECT**

MONTHLY NEWSLETTER

Subscribe to our monthly newsletter to stay informed about peer-to-peer collaboration opportunities, technical assistance, innovative solutions, and upcoming trainings.

2**COLLABORATE**


CONSORTIUM MEETINGS


Join our virtual meetings every 3rd Tuesday at 8:30 AM (EST) to explore collaborative, innovative solutions that support workforce and academic professionals across Ohio's educational institutions in addressing manufacturing and tech talent needs.


3**CONTRIBUTE**

OTN RESOURCES

From industry-aligned partnerships and earn-and-learn programs to faculty development and K-12 outreach, Ohio TechNet offers innovative tools and resources to help institutions and individuals thrive. Visit our website to learn more.

 440-366-4215

 ohiotech.net

 info@ohiotech.net

OhioTechNet

Experiential Learning Webinar Series

Join the Ohio Association of Community Colleges (OACC) and Ohio TechNet in this dynamic six-part webinar series exploring the full spectrum of experiential learning—from foundational concepts to innovative earn-and-learn models that strengthen pathways into high-demand fields—reimagine what experiential learning can look like on your campus.

Upcoming Webinars:

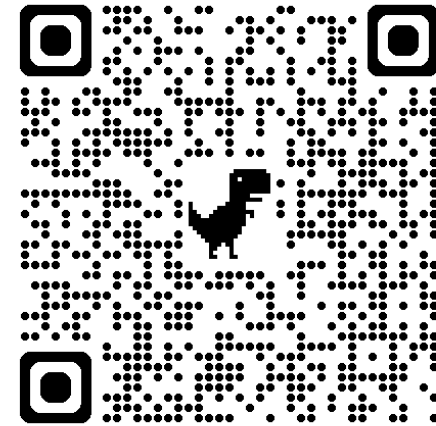
Building Industry Partnerships - July 22, 2026

- Innovative Approaches: Micro-Internships and Project-Based Learning - September 30, 2026
- Leveraging Simulations and Virtual Labs - November 18, 2026
- Recap & Launch of the **Updated** Experiential Learning Replication Guide - December 9, 2026

Register Here: <https://oaccsuccesscenter.regfox.com/experiential-learning-on-your-campus-webinar-series>

View previous webinar slides and recordings:

<https://ohiotech.net/our-work/current-work/webinar-series/>





**FOLLOW
OHIO TECHNET
ON LINKEDIN!**

NEXT MEETING:

**July 21, 2026
8:30am**



Innovative Earn and Learn

- **Lauren Massie, Director of Workforce Services at The Ohio Manufacturers' Association (OMA)** providing an overview of the Technician Fast Track initiative and the upcoming June 25 webinar, [Build Your Technician Pathway](#).
- **Tracey Hooper-Porter, Dean of Tech and Transfer at Washington State College of Ohio**, will highlight WSCO's work with the experiential (L)Earning pilot program and the college's efforts to leverage STEM funding in partnership with the Strategic Ohio Council for Higher Education (SOCHE).



Technician Fast Track

A new earn-and-learn workforce program
built with, and for, Ohio Manufacturers



ONE-YEAR, ENTRY-LEVEL TECHNICIAN PROGRAM

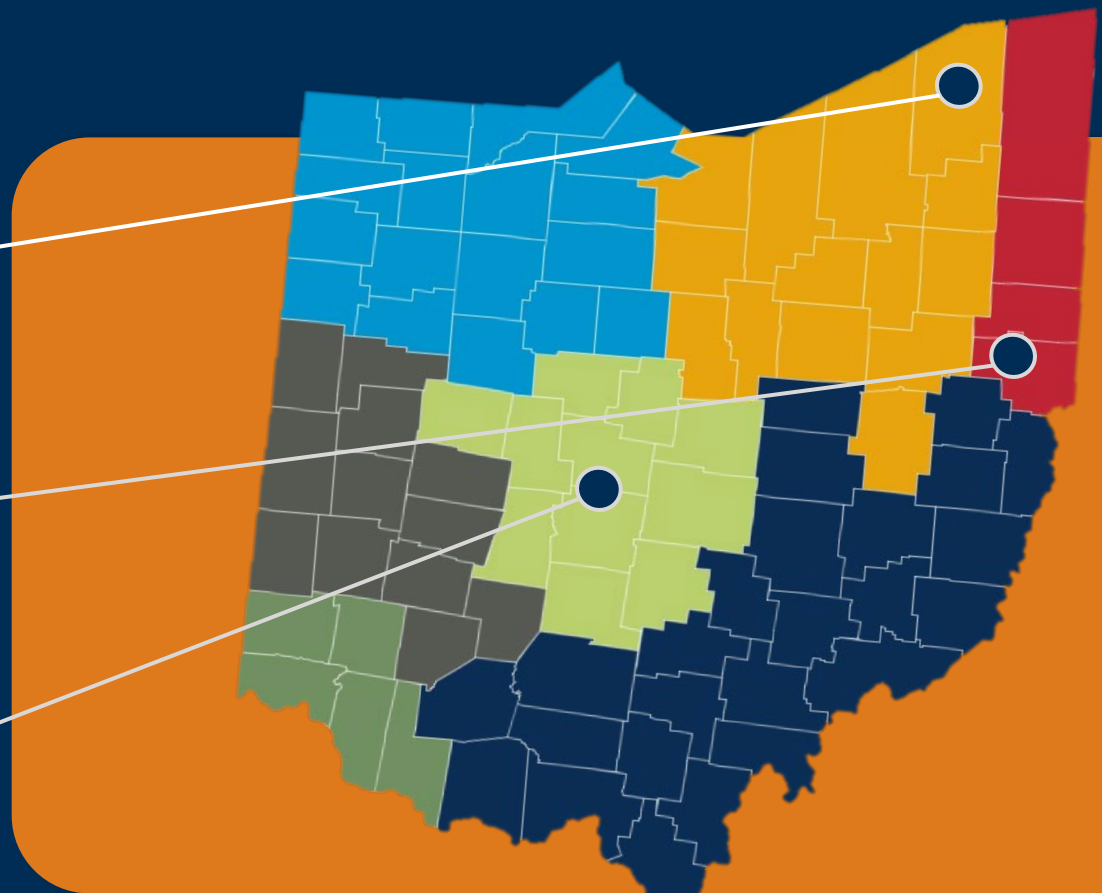
The Ohio Technician Fast Track Program

Regional programs with statewide impact.

Northeast Ohio

Lake to River

Central Ohio



Pilot Regions

Webinar: Build Your Technician Pathway

Key Takeaways

- Accelerate technician talent development
- Align training with technician workforce needs
- Explore participation opportunities



Thursday, June
25, 2026



10 – 11 a.m.

Presenters

- Alex Hertzler – Mahoning Valley Manufacturers' Coalition
- Ashley Woloschak – Xaloy
- Jackie Ruller – Youngstown State University



Registration
Fee: \$19



Questions?
(800) 662-4463

Register for the Webinar

How to Register

- **If you have previously attended an OMA event:**
 - **Sign into your myOMA account and complete your registration**
- **If you have not attended an OMA event:**
 - **Create a myOMA account and include**
 - **Name**
 - **Company**
 - **Company Email Address**
 - **Once account is set up, complete registration process**



OhioTechNet

Innovative Earn and Learn



WASHINGTON STATE
COLLEGE OF OHIO

Tracey Hooper-Porter, Dean of Tech and Transfer

Experiential (L)Earning Pilot



Experiential (L)Earning Pilot

Miba Sinter Engineering Workforce Partnership

Washington State College of Ohio · 2025–2026 Pilot Cohort



WASHINGTON STATE
COLLEGE OF OHIO



Why This Partnership Exists

Manufacturing employers across the Mid-Ohio Valley face a persistent challenge: finding skilled engineering talent. At the same time, engineering students face financial pressure that threatens persistence to completion.

The Employer Problem

Skilled engineering talent pipelines are thin. Entry-level candidates often lack real-world exposure.

The Student Problem

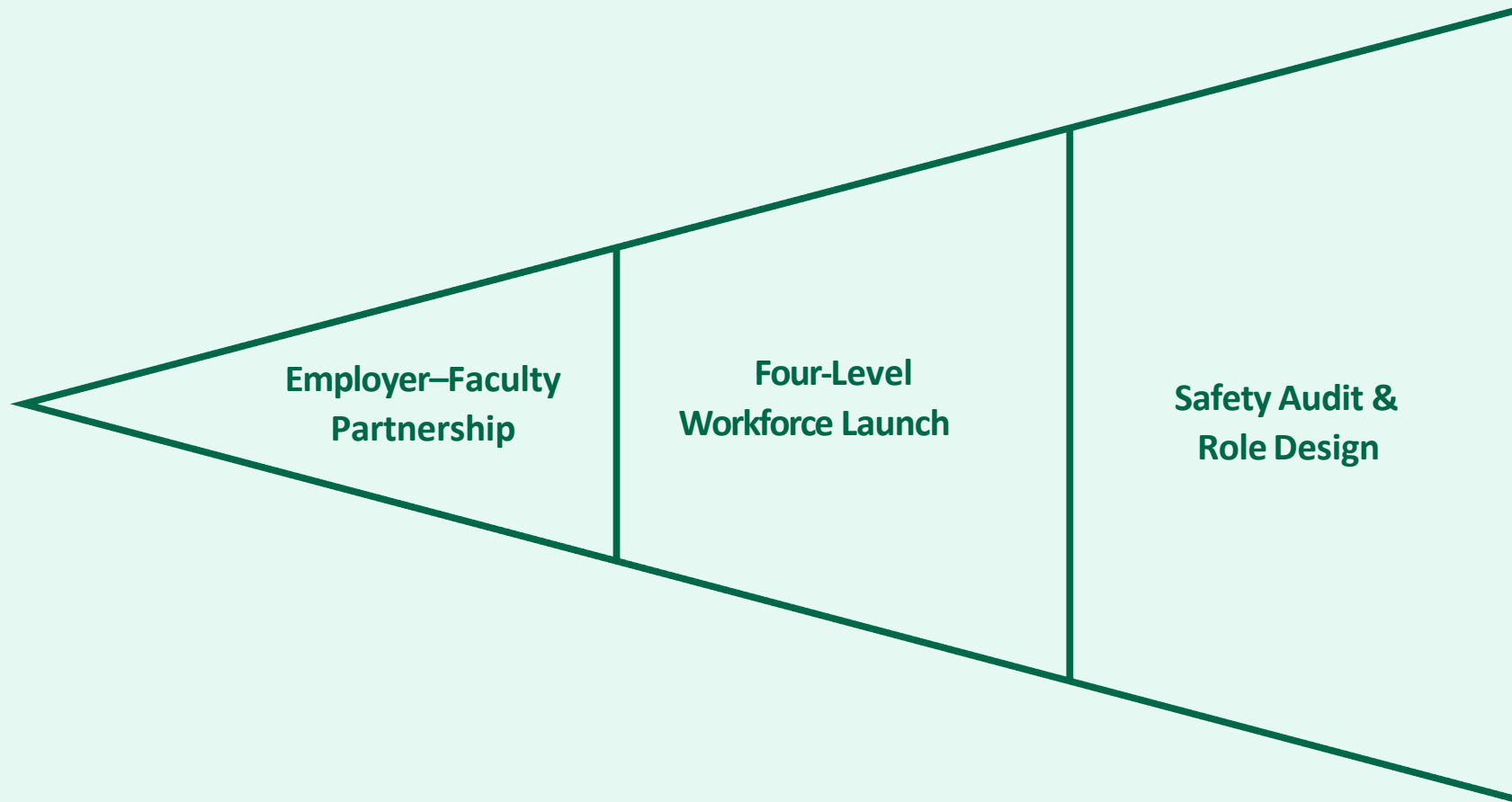
Balancing work and school is difficult. Most part-time jobs don't build career-relevant skills.

The Solution

A structured Earn and Learn model that integrates paid, progressive employment with academic milestones.

How the Program Was Built

The model was designed collaboratively — co-created with the employer and faculty from the ground up.



Miba Sinter's HR leadership worked alongside WSCO's Dean of Technology and Transfer and faculty to align job responsibilities with student academic progression — ensuring the work made sense at every stage of a student's degree journey.

The Four-Level Workforce Model

Students progress through levels aligned to academic milestones, age eligibility, and growing responsibility — with increasing pay at every stage.

Level	Who's Eligible	Role Focus	Schedule	Pay
1	CCP students under 18	Inspection & Control (minors-approved)	Flexible	\$16.50/hr
2	CCP age 18+ or 1st-year traditional	Rotation through all production processes	Flexible	\$17.50/hr
3	Associate degree completers / 3rd-year	Production floor + technical engineering tasks	Flexible	\$20.00/hr
4	4th-year bachelor's students	Defined role on engineering team; tuition reimbursement eligible	Hybrid	\$22.00/hr

Removing Barriers to Participation



Transportation Support

WSCO leveraged grant funding to provide \$50 gas cards for every 30 hours worked — with students eligible to earn up to five cards each.

Wage Relief for the Employer

Additional grant funding covered up to 300 hours per student in wage reimbursement for Miba — though the company confirmed they would have participated regardless of the subsidy.

Academic Credit Integration

Students whose degree plans required credit-bearing internships could apply their Earn and Learn hours toward those requirements — no double burden.

Recruitment and Launch

Once the model was finalized, Miba's HR Manager, WSCO faculty, and college leadership presented the opportunity directly to all engineering students on campus — followed by open Q&A.

5

Students Interested

Following the employer presentation and Q&A session

4

Students Enrolled

Completed the full pilot through Spring 2026

80%

Conversion Rate

From interest to active enrollment in a brand-new program

What We Heard at the Debrief

April 23, 2026 — Formal Debrief with Employer, Students, Faculty, and College Leadership

✓ Flexible Scheduling Honored

Students reported Miba consistently respected the program's flexible scheduling commitments — a non-negotiable for student success.

✓ Academic Progress Maintained

All four participants remained enrolled and on track toward degree completion throughout the pilot.

✓ Employer Satisfaction Strong

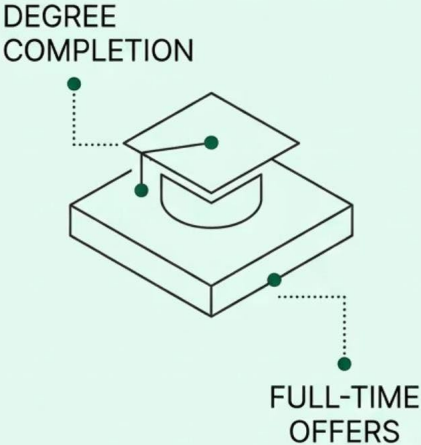
Miba leadership expressed genuine satisfaction with both the program structure and the performance of participating students.

⚠ Supervisor Onboarding Gap

One improvement identified: supervisors would benefit from additional training on student employee expectations and the educational purpose of the model.

Early Impact: Results That Matter

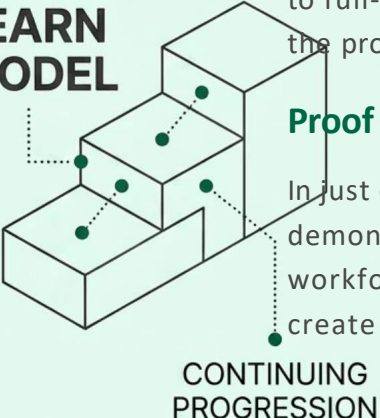
SUCCESS: 1 STUDENT



EMPLOYED AT
MIBA SINTER

PROGRESSION: 3 STUDENTS

EARN & LEARN MODEL



NEXT ACADEMIC
YEAR

A 100% Retention Rate

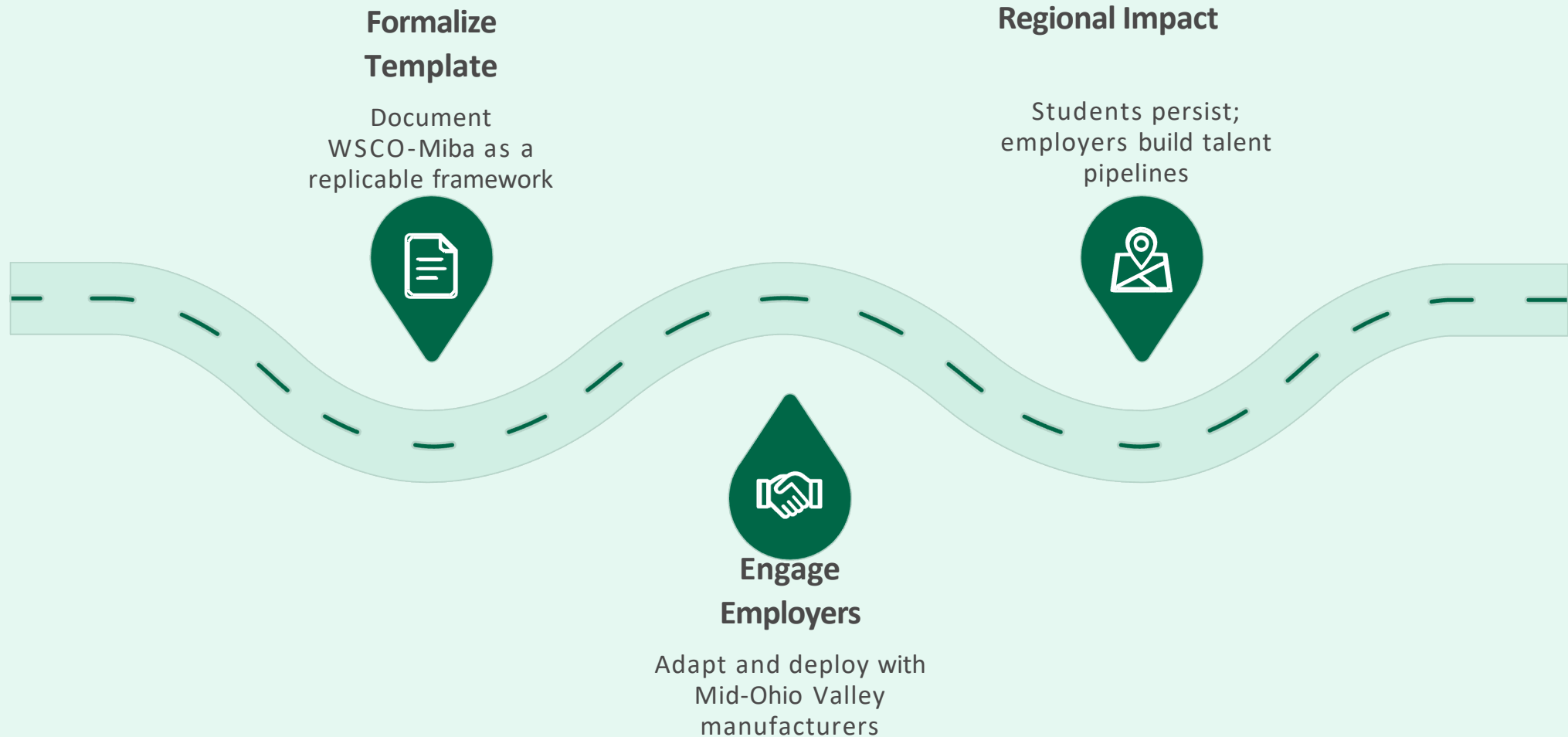
Every student who enrolled in the pilot is either transitioning to full-time employment or continuing to advance through the program. No dropouts. No disengagement.

Proof of the Model

In just one semester, the Earn and Learn model demonstrated it can simultaneously serve employer workforce needs, support student persistence, and create a genuine career pathway — not just a job.

What Comes Next

The pilot's success creates a clear mandate: build a replicable model that can scale across the Mid-Ohio Valley region.



The goal is not to replicate this exact program — it's to replicate the design process that made it work: collaborative, student-centered, and employer-driven.

A Model Worth Scaling

For Students

Earn real wages in a career-relevant role without sacrificing academic progress.

For Employers

Build a loyal, trained talent pipeline from the ground up — before the talent shortage becomes a crisis.

For the Region

Keep talent local, grow the workforce, and strengthen the economic backbone of the Mid-Ohio Valley.

Contact Washington State College of Ohio to learn how your organization can partner in the next cohort.

Thank you,

Tracey Hooper-Porter, Dean of Technology and Transfer

thooperporter@wscc.edu